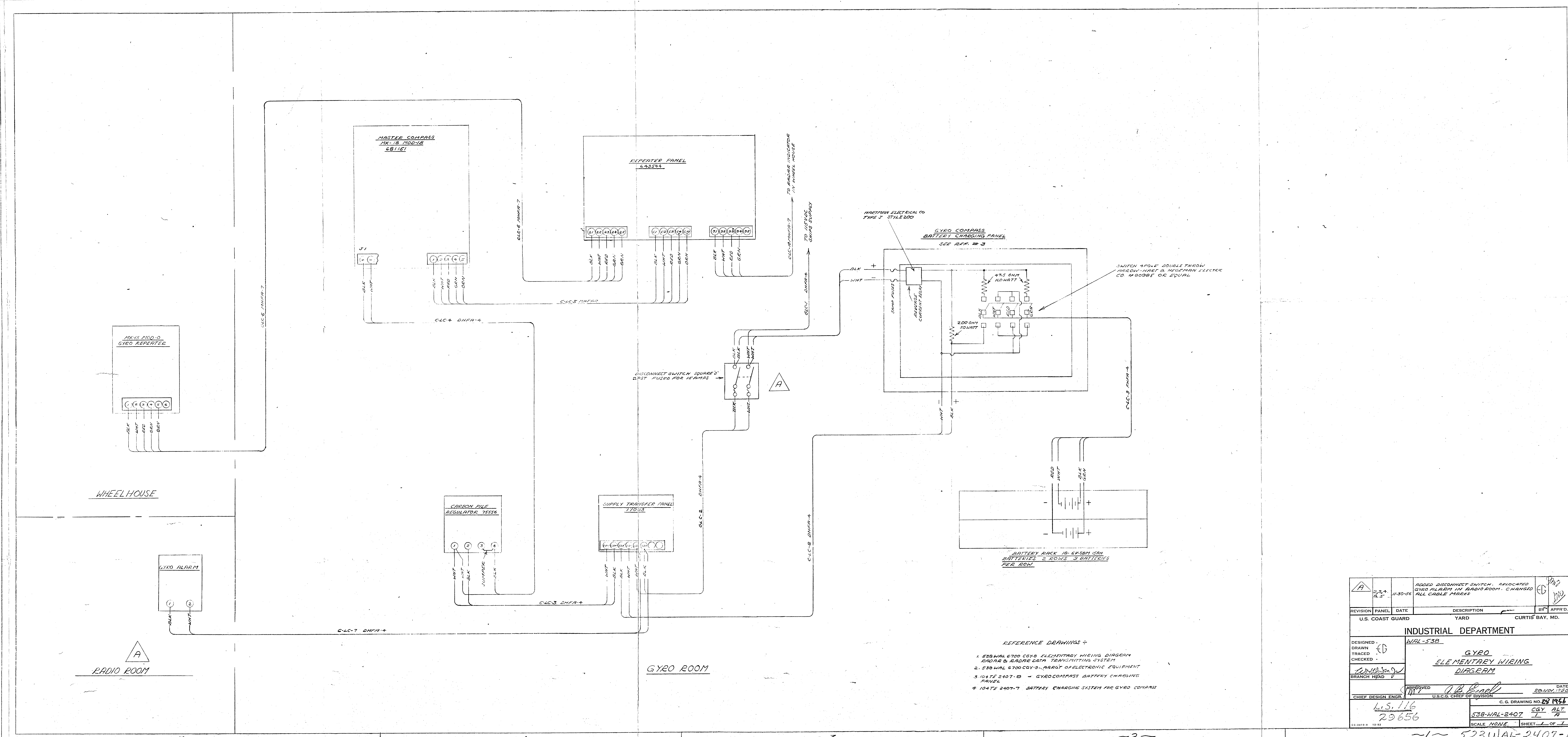


DEPARTMENT	DATE ISSUED
REG. DIVISION	11/30/56
PRODUCTION	1/1
P. & E.	1/1
STENC. SHOP	1/1
SHEET METAL SHOP	1/1
TRACING SHOP	1/1
MACHINE SHOP	1/1
OUTSIDE MACH.	1/1
ELECTRIC SHOP	1/1
PIPE SHOP	1/1
WELDING SHOP	1/1
ELECTRONICS SHOP	1/1
PAINT SHOP	1/1
BOILER SHOP	1/1
PATTERN SHOP	1/1
SHOECRE	1/1
HEADQUARTERS LEVEL	1/1
HEADQUARTERS (2ND)	1/1
C. C. DISTRICT	1/1
VENDOR	1/1
CO. BALSTON	1/1
ALC. DIV.	1/1
WAL-538	1/1
Wiring Shop 247	1/1
HBC 1000A	1/1
ALTERATION	1/1
TOTAL	1/1

* REPRODUCIBLE



- REFERENCE DRAWINGS -
- 538-WAL-6700 CS-9 ELEMENTARY WIRING DIAGRAM RADAR & RADAR DATA TRANSMITTING SYSTEM
 - 538-WAL-6700 CS-9 - ARRAY OF ELECTRONIC EQUIPMENT
 - 1047E-2407-B - GYROCOMPASS BATTERY CHARGING PANEL
 - 1047E-2407-7 BATTERY CHARGING SYSTEM FOR GYRO COMPASS

A	2, 3, 4	11-30-56	ADDED DISCONNECT SWITCH. RELOCATED GYRO ALARM IN RADIO ROOM. CHANGED ALL CABLE MARKS	
	REVISION	PANEL	DATE	
U.S. COAST GUARD			YARD CURTIS BAY, MD.	
INDUSTRIAL DEPARTMENT				
DESIGNED	WAL-538			
DRAWN	GYRO			
TRACED	ELEMENTARY WIRING			
CHECKED	DIAGRAM			
BRANCH HEAD				
APPROVED			DATE 28 NOV 1956	
CHIEF DESIGN ENGR.	U.S.C.G. CHIEF OF DIVISION		C. G. DRAWING NO. 29 1956	
L.S. 116		CGY. 2LT		
29656		L A		
SCALE NONE		SHEET 1 OF 1		

~5~

~4~

~3~

~2~

~1~ 523WAL-2407-1